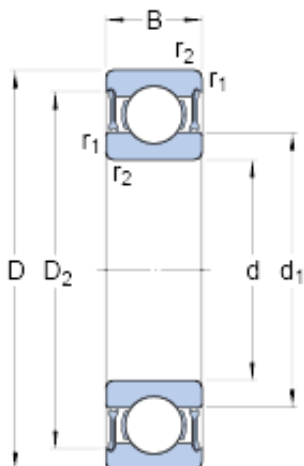




BEARING INDUSTRIA CUSCINETTI S.P.A.



30 mm x 42 mm x 7 mm skf W 61806-2RZ Deep groove ball bearings

Bearing No. W 61806-2RZ

W 61806-2RZ Bearing 2D drawings and 3D CAD models

Size	42x30x7 mm
Bore Diameter	42 mm
Outer Diameter	30 mm
Width	7 mm
d	30 mm
D	42 mm
B	7 mm
d ₁	33.11 mm
D ₂	39.2 mm
r _{1,2} - min.	0.3 mm
D _a - max.	40 mm
r _a - max.	0.3 mm
Basic dynamic load rating - C	3.6 kN
Basic static load rating - C ₀	2.9 kN
Fatigue load limit - P _u	0.125 kN
Reference speed	34000 r/min
Limiting speed	17000 r/min
Calculation factor - k _r	0.02
Calculation factor - f ₀	14.1
d ₁	33.11 mm
D ₂	39.2 mm
r _{1,2} min.	0.3 mm
d _a min.	32 mm
d _a max.	33 mm



BEARING INDUSTRIA CUSCINETTI S.P.A.

D_a max.	40 mm
r_a max.	0.3 mm
Basic dynamic load rating C	3.58 kN
Basic static load rating C_0	2.9 kN
Fatigue load limit P_u	0.125 kN
Calculation factor k_r	0.02
Calculation factor f_0	14.1
Mass bearing	0.024 kg