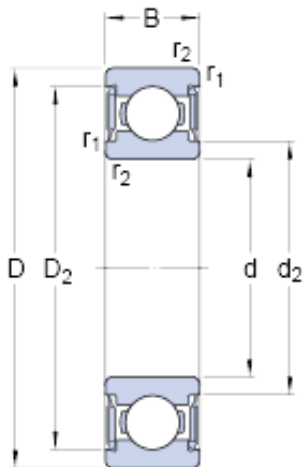




BEARING INDUSTRIA CUSCINETTI S.P.A.



7 mm x 14 mm x 5 mm skf W 628/7-2RS1 Deep groove ball bearings

Bearing No. W 628/7-2RS1

W 628/7-2RS1 Bearing 2D drawings and 3D CAD models

Size	14x7x5 mm
Bore Diameter	14 mm
Outer Diameter	7 mm
Width	5 mm
d	7 mm
D	14 mm
B	5 mm
d ₂	8.5 mm
D ₂	12.7 mm
r _{1,2} - min.	0.15 mm
d _a - min.	8.2 mm
d _a - max.	8.4 mm
D _a - max.	12.8 mm
r _a - max.	0.15 mm
Basic dynamic load rating - C	0.663 kN
Basic static load rating - C ₀	0.26 kN
Fatigue load limit - P _u	0.011 kN
Limiting speed	28000 r/min
Calculation factor - k _r	0.02
Calculation factor - f ₀	7.2
d ₂	8.5 mm
D ₂	12.7 mm
r _{1,2} min.	0.15 mm
d _a min.	8.2 mm



BEARING INDUSTRIA CUSCINETTI S.P.A.

d_a max.	8.4 mm
D_a max.	12.8 mm
r_a max.	0.15 mm
Basic dynamic load rating C	0.663 kN
Basic static load rating C_0	0.26 kN
Fatigue load limit P_u	0.011 kN
Calculation factor k_r	0.02
Calculation factor f_0	7.2
Mass bearing	0.0029 kg